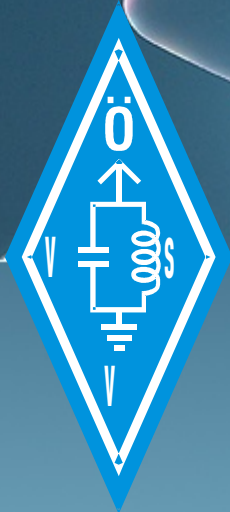




# RMS Express




Gert Kmet, OE3ZK



# Was ist RMS Express?

- RMS Express ist eine Benutzersoftware für E-Mail Kommunikation über Funk
- Peer to Peer (P2P) oder
- WL2K Radio Message Server (RMS) Verfahren
- Es unterstützt die Betriebsarten:
  - WINMOR (Soundkarten Protokoll)
  - Pactor
  - Packet
  - Telnet via Internet oder andere IP-Netzwerke (HAMNET)
- Das Programm ist kostenlos
- WINMOR = kostengünstig



# Soundcard + Interface



- USB Verbindung zum PC = kein Kabelsalat
- Stromversorgung erfolgt via USB





# Systemanforderungen

- PC-Betriebssysteme:
  - Windows XP
  - Windows Vista
  - Windows 7
  - Windows Server 2003
  - Windows Server 2008
  - Alle Betriebssysteme welche .NET 3.5 unterstützen
  - **Windows 2000 funktioniert NICHT**
- Mindestvoraussetzungen Hardware:
  - Pentium > 500 MHz
  - WINMOR benötigt > Prozessorleistung + Soundkarte + Interface
- ICOM TRX IC-7200 und IC-7600 werden **ohne Soundkarte** mit Treibersoftware USB Audio CODEC direkt unterstützt
- TRX PTT Umschaltezeiten < 100ms !!
- Frequenzgenauigkeit < +/- 100 Hz !!



# RMS Express Installation

- Download von:
  - <http://groups.yahoo.com/group/WINMOR/files/>
  - <http://www.winlink.org/ClientSoftware>
- UNZIP in ein TEMP Verzeichnis
- **ReadMeFirst.txt LESEN!!!**
- Doppelklick auf SETUP
- Falls eine Warnung kommt „Install NET 3.5“ so muß dieses von <http://www.microsoft.com/downloads/> geholt werden (alle neuen Windows Betriebssysteme haben NET 3.5 bereits installiert)
- Das DEFAULT Verzeichnis C:\RMS Express wird vorgeschlagen
- Desktop-Verknüpfung mit RMSExpress.exe manuell herstellen!
- Nach Programmstart **HILFE TEXTE LESEN !!!**



# RMS Express Properties

**RMS Express Properties** [X]

**Call Signs**

My Callsign:

Optional Aux Call signs:

Aux Call 1:

Aux Call 2:

Add callsign suffix if required (optional):

My Grid Square:  |  **Lat/Lon to Grid Square**

My Password (optional):   Use Secure Login

NOTE: A password is required only if you use secure login. Passwords are not required for most installations.

**Service Type**

Fixed/Mobile Amateur

Maritime Mobile Amateur

Emergency Communications Amateur

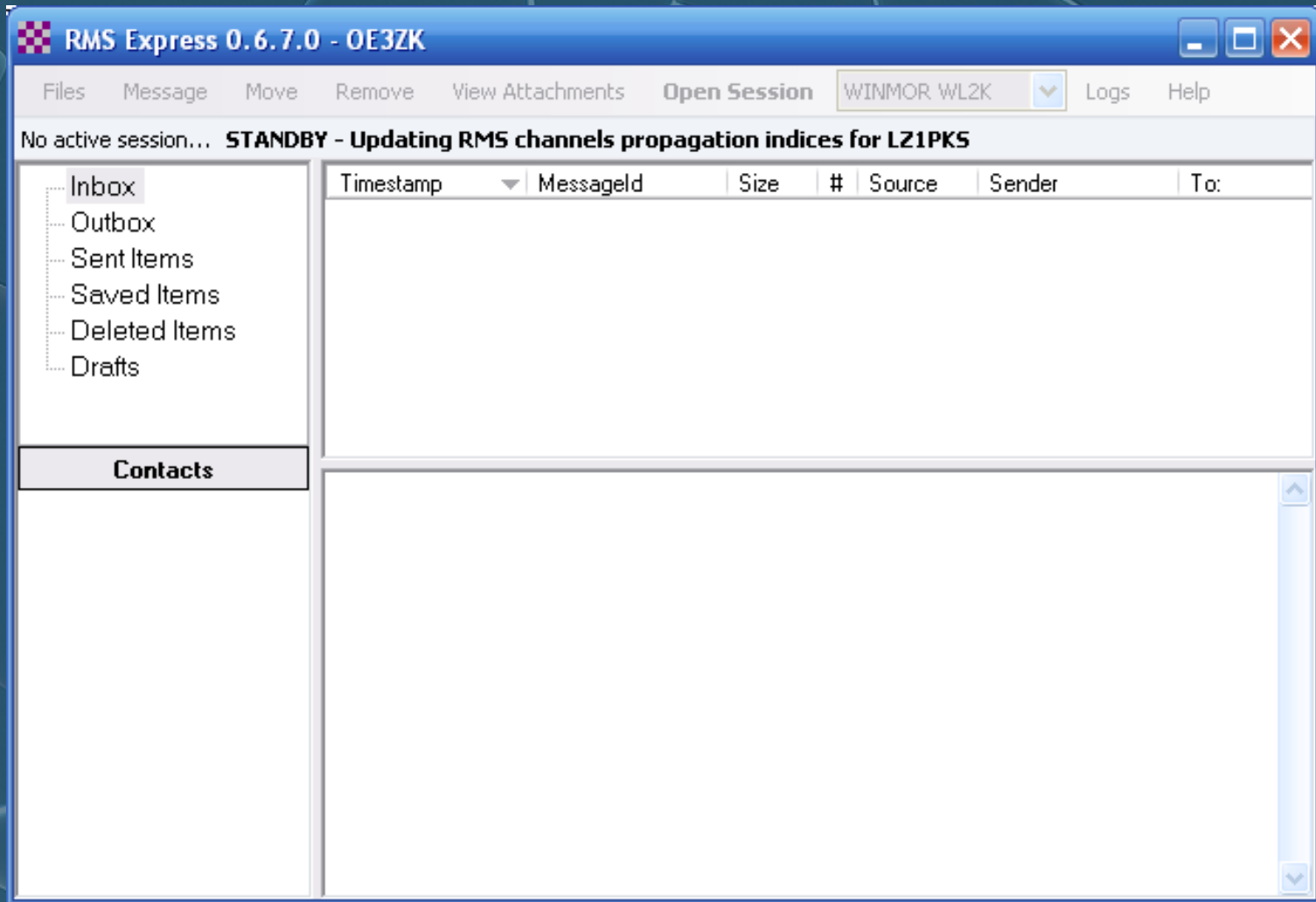
MARS/Federal Agency

Keep logs for    weeks

**Update** **Cancel**



# RMS Express Hauptfenster



The screenshot shows the main window of RMS Express 0.6.7.0 - OE3ZK. The window title bar includes the application name and standard Windows window controls. The menu bar contains: Files, Message, Move, Remove, View Attachments, Open Session, WINMOR WL2K (dropdown), Logs, and Help. The status bar displays: No active session... STANDBY - Updating RMS channels propagation indices for LZ1PKS.

The interface is divided into three main sections:

- Left Panel:** A tree view showing folders: Inbox, Outbox, Sent Items, Saved Items, Deleted Items, and Drafts. Below this is a section titled **Contacts** which is currently empty.
- Top Right Panel:** A table with the following headers: Timestamp, MessageId, Size, #, Source, Sender, and To:.
- Main Content Area:** A large empty space with a vertical scrollbar on the right side.



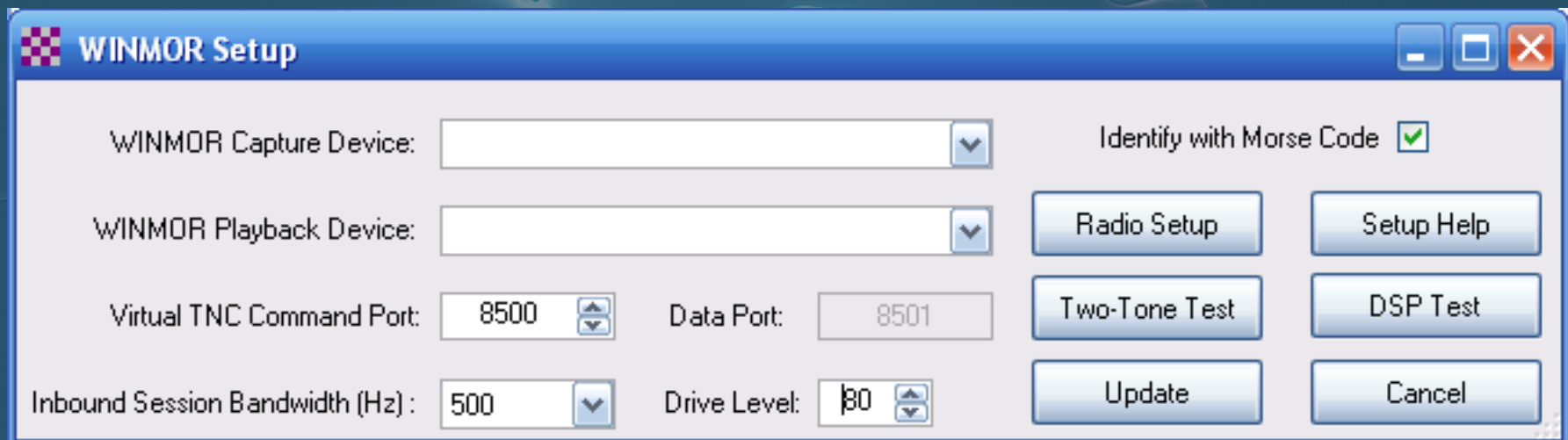


# Betriebsarten konfigurieren

1. Betriebsart wählen (Winmor P2P, od. WL2K, Pactor, Packet , Telnet



- 2 . Betriebsart konfigurieren und testen







# Radio/PTT/Ant. konfigurieren

**WINMOR WL2K Settings**

**Radio Selection**

Select Radio Model: Icom Amateur Radios   
Antenna Selection: Default

Icom Address: 76  
USB     USB Digital     VHF FM     Use Internal Tuner

**Radio Control Port**

Serial Port to Use: COM5     Baud: 9600     Enable RTS     Enable DTR

**PTT Port (Optional)**

Serial Port to Use: CI-V     Baud: 9600     Enable RTS     Enable DTR

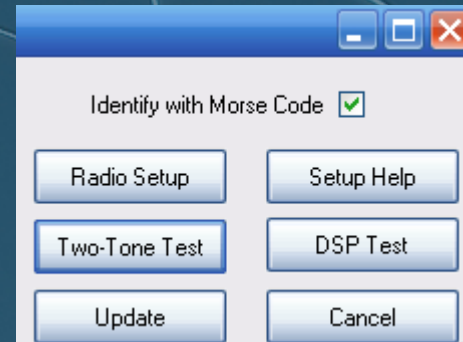
**Antenna Selection Port (Optional)**

Serial Port to Use: None     Baud: 9600     Enable RTS     Enable DTR

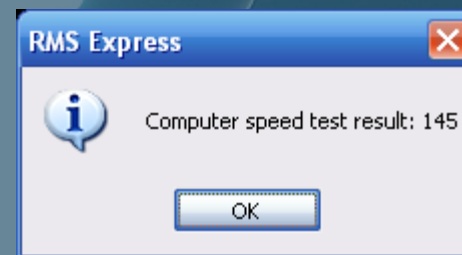
Antenna Control String:

# Betriebsart testen

Winmor testen

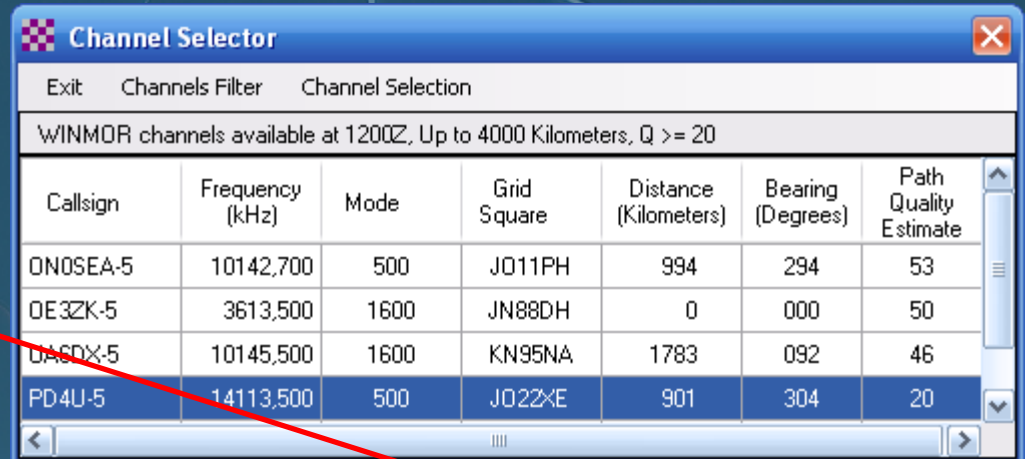


- Two-Tone Modulationstest:
  1. PTT Funktion beobachten
  2. Kompressor **ausschalten**
  3. Minimalste ALC
  4. Max. 70 % der HF-Spitzenleistung
- DSP Test = DSP Prozessorleistung
- Abspeichern oder Cancel

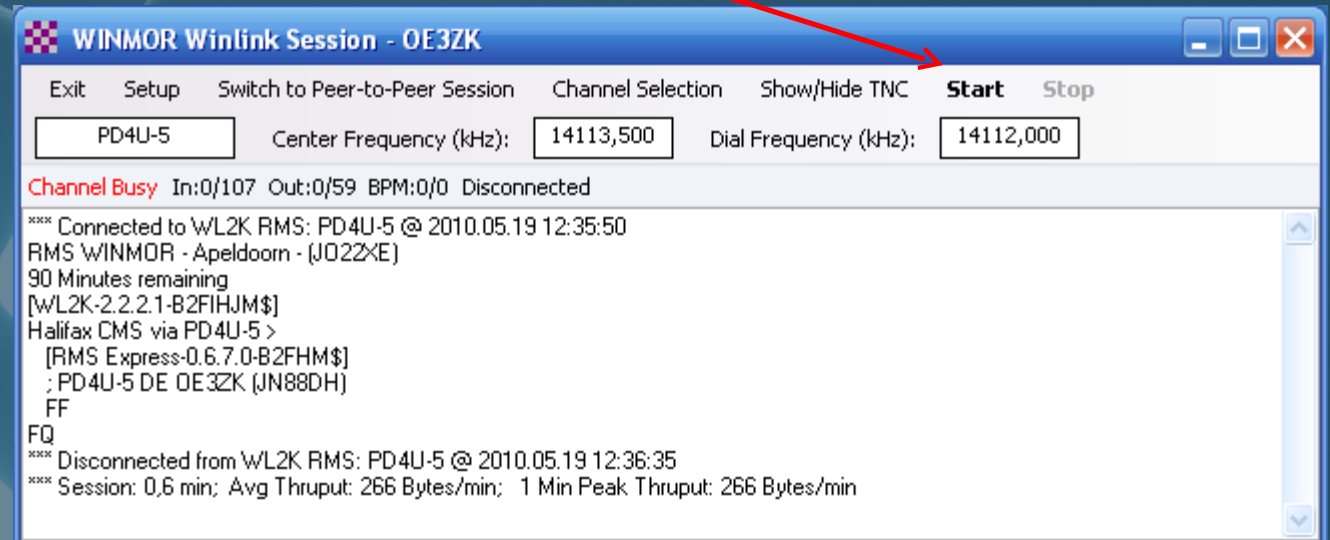


# Start CONNECT

- Gegenstation auswählen
  1. Path Quality Estimate beachten
  2. START CONNECT



Callsign	Frequency (kHz)	Mode	Grid Square	Distance (Kilometers)	Bearing (Degrees)	Path Quality Estimate
ON0SEA-5	10142,700	500	J011PH	994	294	53
OE3ZK-5	3613,500	1600	JN88DH	0	000	50
UN6DX-5	10145,500	1600	KN95NA	1783	092	46
PD4U-5	14113,500	500	J022XE	901	304	20



WINMOR Winlink Session - OE3ZK

Exit Setup Switch to Peer-to-Peer Session Channel Selection Show/Hide TNC **Start** Stop

PD4U-5 Center Frequency (kHz): 14113,500 Dial Frequency (kHz): 14112,000

**Channel Busy** In:0/107 Out:0/59 BPM:0/0 Disconnected

\*\*\* Connected to WL2K RMS: PD4U-5 @ 2010.05.19 12:35:50  
RMS WINMOR - Apeldoorn - (J022XE)  
90 Minutes remaining  
[WL2K-2.2.2.1-B2FIHJM\$]  
Halifax CMS via PD4U-5 >  
[RMS Express-0.6.7.0-B2FHM\$]  
: PD4U-5 DE OE3ZK (JN88DH)  
FF  
FQ  
\*\*\* Disconnected from WL2K RMS: PD4U-5 @ 2010.05.19 12:36:35  
\*\*\* Session: 0,6 min; Avg Thruput: 266 Bytes/min; 1 Min Peak Thruput: 266 Bytes/min

- CONNECT beobachten

# Winmor Soundcard TNC

ISS = Information  
Sending Station

WINMOR Sound Card TNC Port:8500

Help Hide Send ID

Connection State

ISS

TCP Capture OK

Transmit

0 Avg ACK Percentage 100

Xmt Frame: 8 Car V16PSK FEC Data

Receive

Rcv Level: Remote Station Offset: 0,5 Hz

Rcv Frame: ACK: 11111111 xFF

Busy Detector: Busy (N)

Waterfall 2 KHz

4FSK / 82

IRS = Information  
Receiving Station

WINMOR Sound Card TNC Port:8500

Help Hide Send ID

Connection State

IRS

TCP Capture OK

Transmit

0 Avg ACK Percentage 100

Xmt Frame: ACK: 11111111 xFF

Receive

Rcv Level: Remote Station Offset: -0,2 Hz

Rcv Frame: 8 Car V16PSK FEC Data

Busy Detector:

Waterfall 2 KHz

16PSK / 55



# RMS Express

